

*“the closest approach  
to the original sound”*



## USER MANUAL

## Congratulations and welcome to a new ERA in headphone listening

*The Closest Approach To The Original Sound* – these words have formed the cornerstone of QUAD's philosophy since 1936. More than just a slogan, it underlies the company's commitment to producing the finest audio equipment, capable of reproducing all the elements and emotion of a live musical performance. QUAD has drawn upon its expertise with electrostatic loudspeakers (ESL) to design its planar film diaphragm headphones – the ERA-1. ERA-1 is engineered for the true audio enthusiast.

To ensure a natural sound in keeping with the company's heritage, QUAD's engineers have developed a planar magnetic drive film delivering fast, open and transparent performance, similar in quality to the famous ESLs.

### PACKAGE CONTENTS

- ERA-1 headphones, fitted with fleecy, latex ear cushion
- EVA carrying case
- Additional soft leather ear cushion
- 3.5mm input jack Y-cable
- 6.5mm input jack adapter
- User manual
- Warranty and registration card

### PRODUCT SPECIFICATIONS

## Specifications

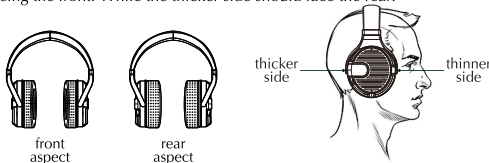
|                           |                             |
|---------------------------|-----------------------------|
| Model                     | ERA-1                       |
| Type                      | Planar Diaphragm Headphones |
| Impedance                 | 20 $\Omega$                 |
| Sensitivity               | 94dB/mW                     |
| Frequency Response        | 10–40,000Hz                 |
| Total Harmonic Distortion | $\leq$ 0.2% (1kHz, 100dB)   |
| Rated Input Power         | 100mW                       |
| Weight w/o Cable          | 420g                        |

### USING THE HEADPHONES

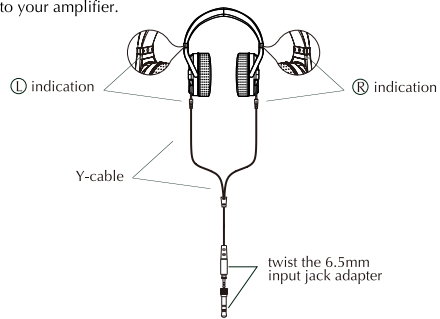
1. ERA-1 can be used with a variety of amplifiers and sources.
2. The headband can be extended by sliding down the headphones to fit comfortably to your ears.



3. When you use the additional soft leather ear cushion, it has one side thicker than the other. Please wear the headphones with the thinner side facing the front. While the thicker side should face the rear.



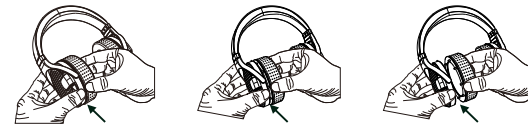
4. When plugging the Y-cable into the headphones, look for the small R and L indicated on the headband and match correctly. Connect the other end to your amplifier.



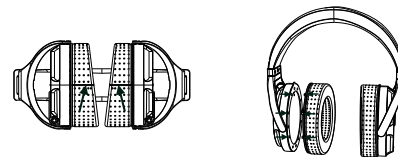
5. When unplugging the Y-cable, grasp and pull the connector. Never pull on the cable.

### CHANGING THE CUSHIONS

1. The ERA-1 comes with the fleecy ear cushion fitted as standard. There are additional soft leather cushions that provide an alternative listening experience.
2. To change the ear cushion, hold the aluminium enclosure firmly and pull gradually to separate the ear cushion.



3. To plug in the ear cushion, push firmly and match the pins under the ear cushion into the holes located on the ear plate. Remember that the thinner side of the additional soft leather ear cushion should face the front.



### ADDITIONAL NOTES

1. Upon receipt of these headphones, we recommend warming up by playing for a few hours. This will 'break-in' the headphones to achieve their optimum performance.
2. We recommend reducing the volume of your audio source before placing the headphones over your ears, to prevent hearing damage.
3. Reduce the volume of the amplifier before listening to your headphones.
4. Do not drop or sit on the headphones.
5. We recommend servicing your ERA-1 headphones via approved QUAD service centres only. You should dispose of your used headphones via an approved disposal system only.
6. Please note, the QUAD ERA-1 headphones are not waterproof. Please protect from water, moisture and excessive dust etc.
7. This product contains magnetic material.